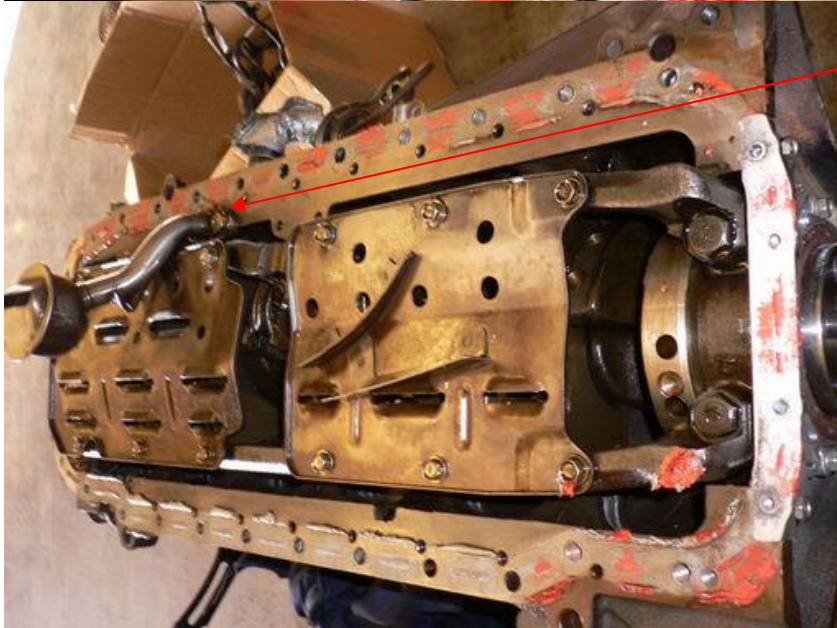


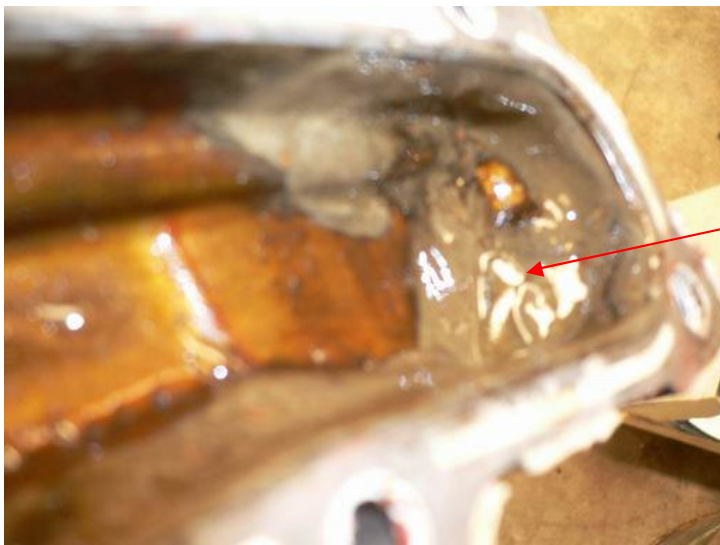
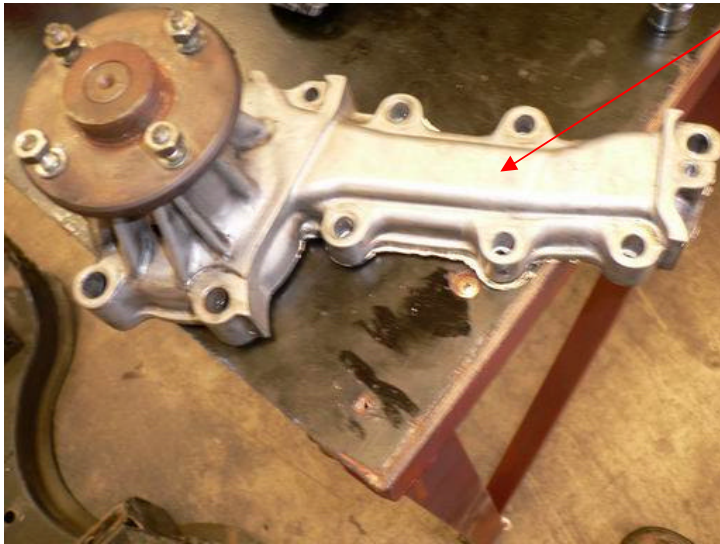


The oil pickup emanating from the front of the motor which will have to be fabricated as a rear pickup





The water pump removed. Block looks good as does the water pump itself but it will be replaced



There is that bloody sludge again in the water pump



There appears to be a protective coating on the inside of the water pump



Sump back on temporarily so that the sludge can be flushed out of the block



Oil filter & cooler housing. This was put under H<sub>2</sub>O and air pumped through to see if cooler leaked bubbles and therefore was the source of the oil in the water ways – no leaks! So still don't know cause of sludge?!!



See it is a GTR motor!