

Building a Hybrid RB26 Z

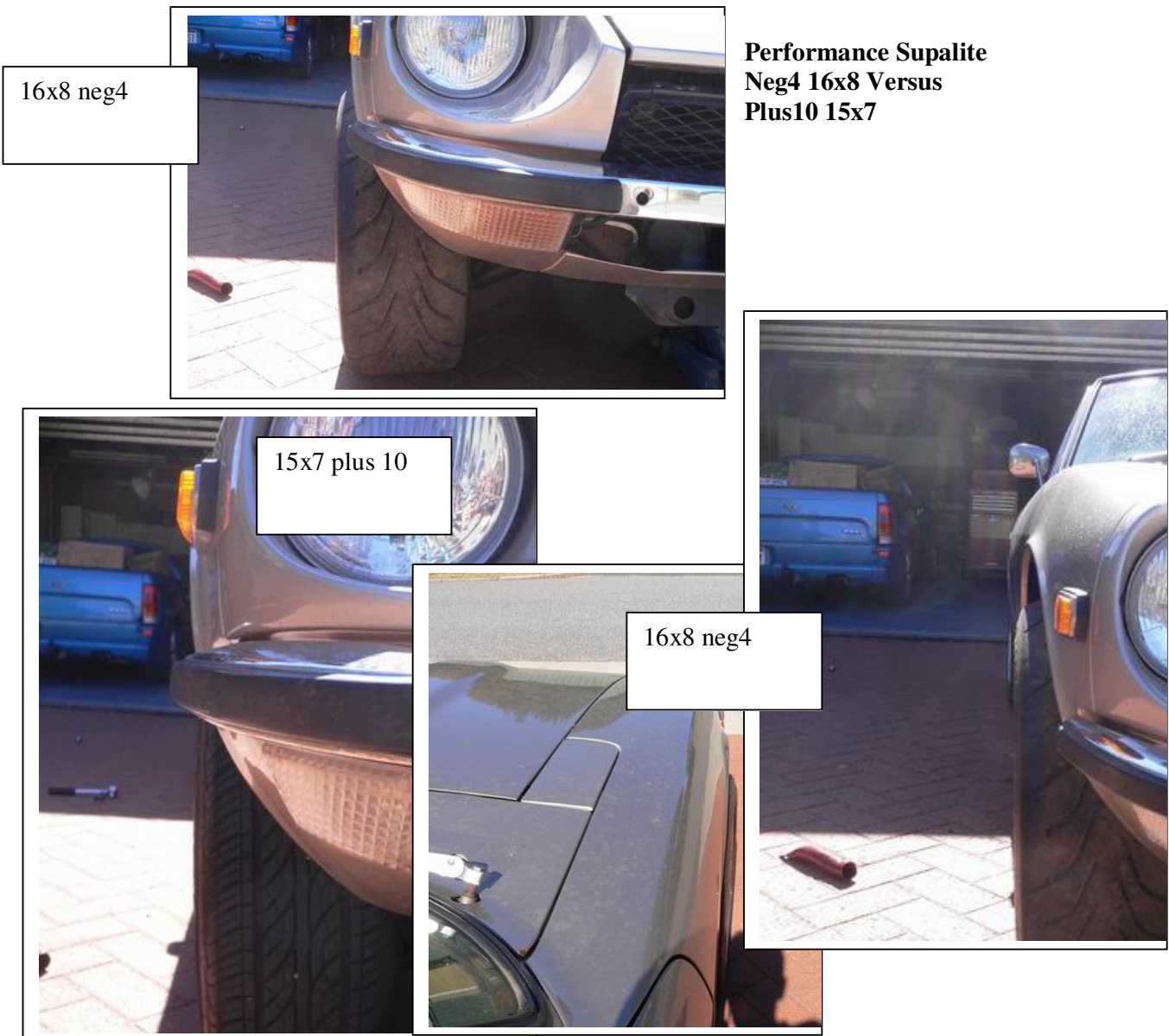
Part 33 Finding the “right” wheels & tyres

Unfortunately with the 4 stud hub and the limited room under the guards there are few wheels that just bolt on to a Z.

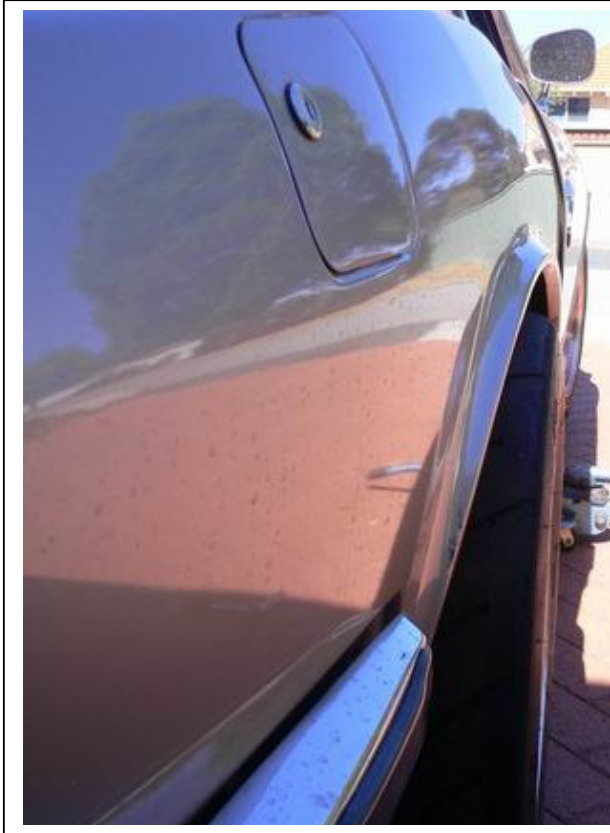
Both our Z's came already fitted with Performance Supalite wheels. The 240Z with 15 x 7 offset plus 12, and the 260Z with 15 x 7 offset plus 10. Apparently the standard spring perches are lower on the 260z than the 240Z just enough to cause issues when looking at larger wheels.

If you run coil over suspension this is not an issue on the 260Z as it gains you some room.

FRONT



REAR



16x8 neg4

15x7 plus 10



NEW MAGS



These are the 16 x 8 inch wheels I bought in Manila for \$754 for 4. They are Rota RB wheels with +10 offset, 4 stud 114.3, 73mm hub centre, colour Hyper Black with royal lip (polished)



Well how did the new wheels fit?



The new mag bolted up to the rear fender and didn't stick out the side too much



The front was a different story with the rim hitting the strut – a spacer will be required, until I fit coil overs

What tyres to use?

I looked at many tyres including the Kumho KU36, V70, Falken ZE912, but in the end went with the Toyo RA1 which I also use on the 240Z. As they are phasing out this tyre I got them \$100 a tyre cheaper. I wanted as large as possible on the rear, and the same on the front if possible.



The 245/45/16 fitted on the rear without issue





The 245/45/16 on the rear doesn't require any rolling of the guard





The 245/45/16 was too wide for the front, so a 225/50/16 will be used on the front