

1973 240Z RB26 Conversion

Part 8 Getting some seats that will hold me in!

I like the look of the standard seats and mine had obviously been recovered to a high standard, but they are plain uncomfortable. Given that I will be travelling a lot quicker, and need to stay in one place whilst cornering, it is obvious I will need some new seats, The seats however I want to have a drivers side height adjustment, which most race seats do not have. My mate Martie came to the rescue as usual with some seats he had out of one of their work vehicles. They look good and are supportive so I will try and get them to fit in the Z.



The replacement seat

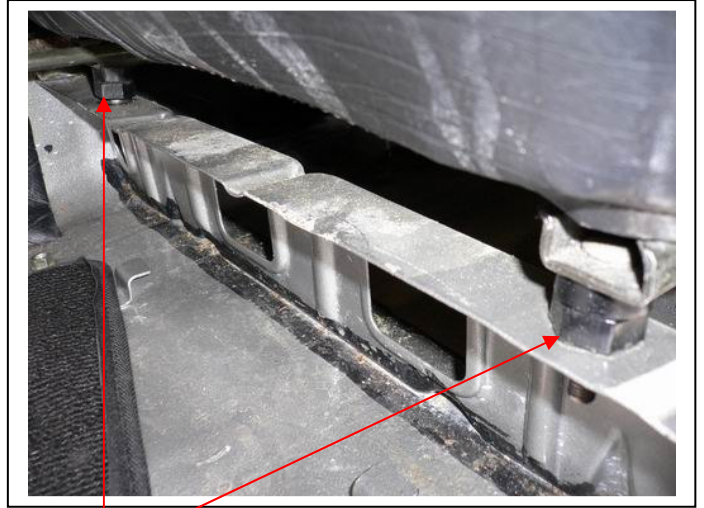
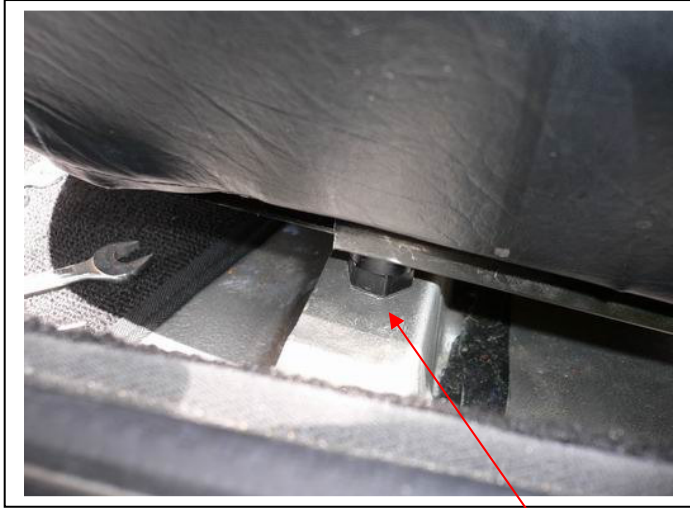


The original seat



Comparing the two seats





The original seats front locating bolts



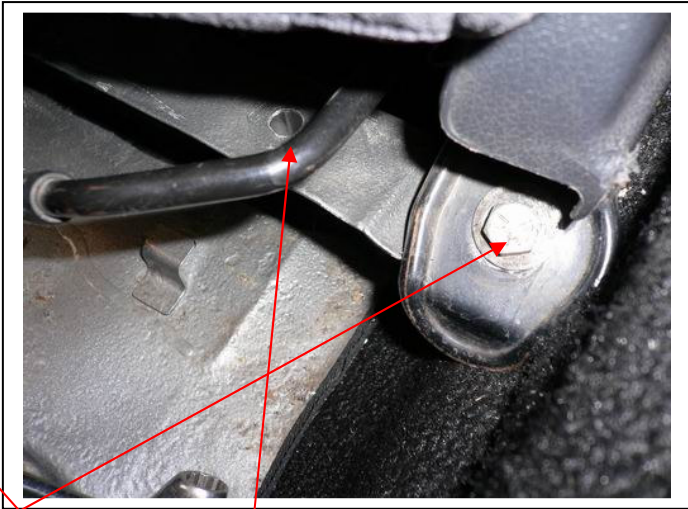
The original seats rear locating bolts



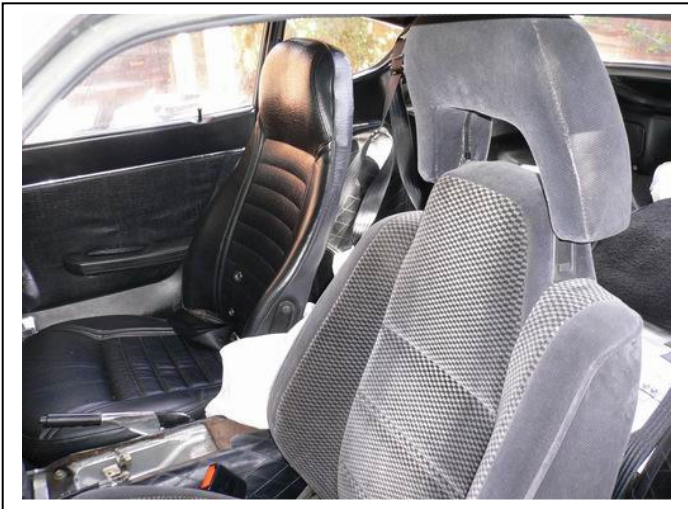
The bare passenger floor after the removal of the original seat



The new seat front mounting points



The original seat front mounting points



The new passenger seat in place

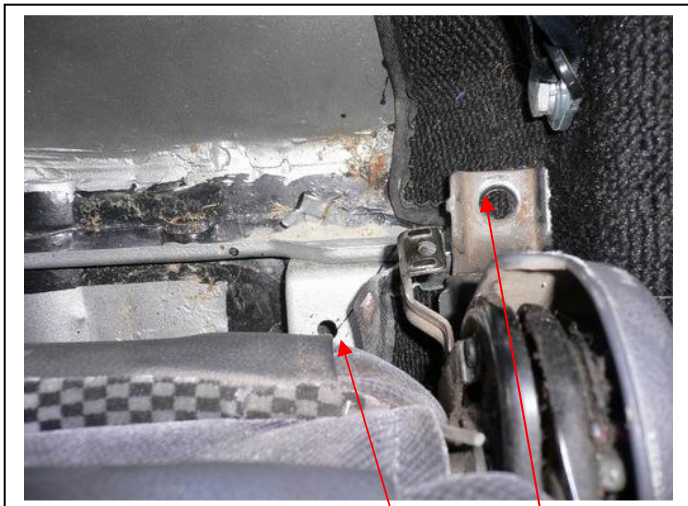




The new passenger seat in place, but driver seat yet to be changed



The new driver seat, much more comfortable, supportive, with adjustable height, lumbar support and ability to tighten the back side supports to suit your back width & cornering speed!!



The rear mounting points of the new seats – brackets still to be fabricated back to the original mounting point